

Schindler Award 2008 – Project plans

Special Mentions: "Keep the Void"

School: Hogeschool voor wetenschap en kunst, Gent (Belgium)

Students: Uiko Nakamura, Fauve Snauwaert, Thomas Van Campenhout

Professors: Prof. Dr. Marc Dujardin, Mr Tomas Ooms



Schindler

INTRODUCTION

At a first glimpse, the site was frightening big, astonishingly beautiful. [A big playground for all our architectural arrangements] What we looked at was a left-over space of the urban tissue. A place with different identities, views, use

This project is a search for possibilities, coherence, diversity, scale, urban needs. At a large scale we tried to create an answer to inclusive urbanism by not making exclusives, by leaving as many possibilities for the present and surely for the future. There is not a single answer to inclusive urbanism, there should not be "rules" to follow. There should however be different ways to experience, potential for future needs.

On a smaller scale we tried to implement the same idea. Keeping possibilities open [voids, diversity and flexibility in houses,] and accessibility in mind.

These smaller projects are not fenced, they make part of the urban tissue, of the public ground.

Schindler Award for Architecture 2007 / 2008

Access for All

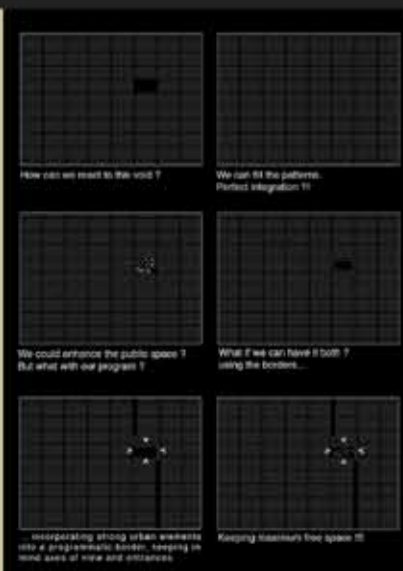
to reclaim the public ground

PRELIMINARY SEARCH

STUDIES ON DEFINING ELEMENTS :
connections, entrances, flows.

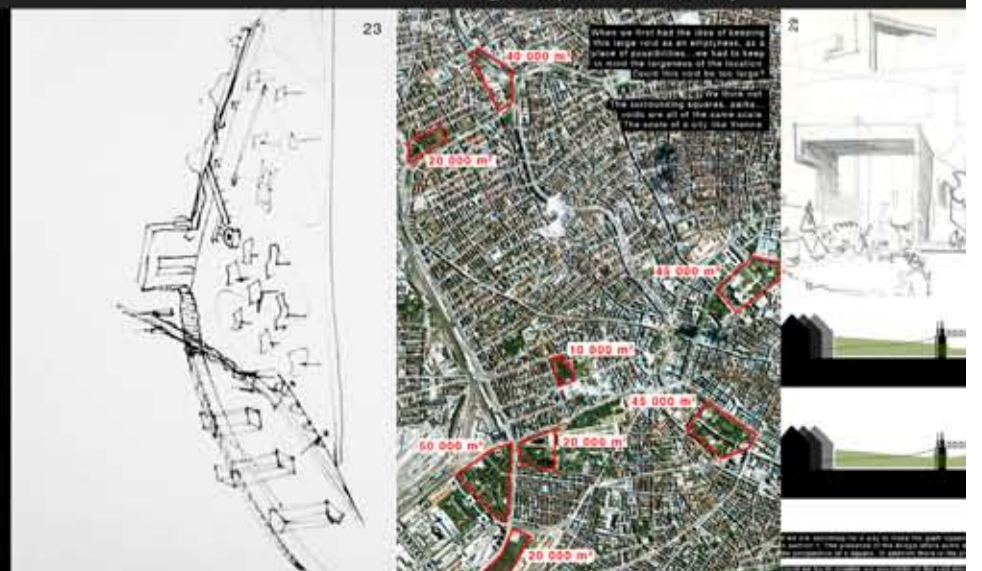


CONCEPT



SCALE

Meaning of squares in the city.



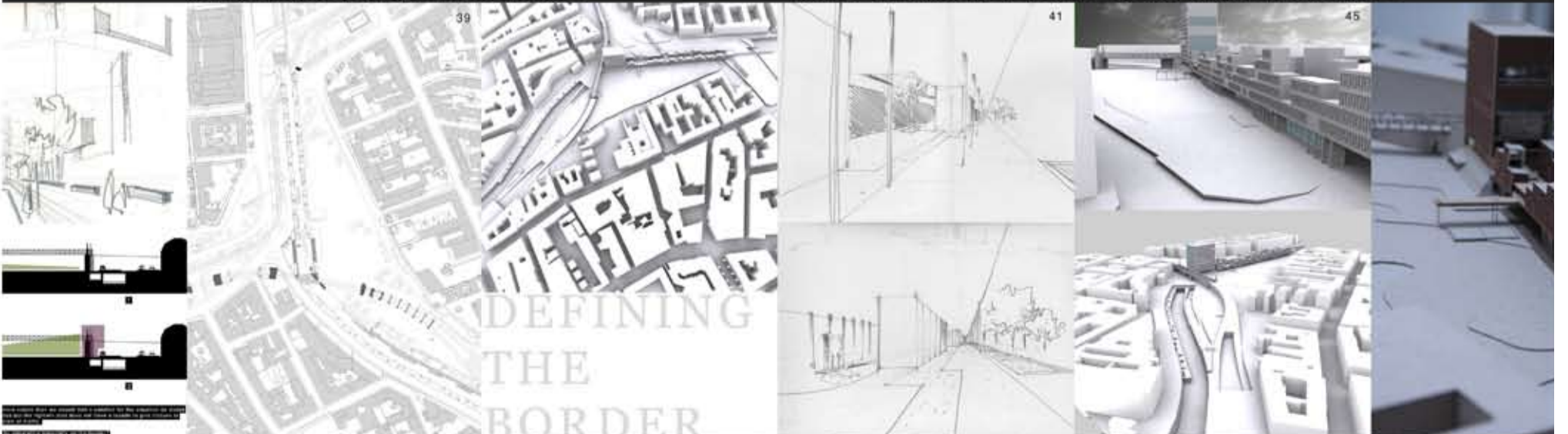


DEFINING THE BORDER

Making a project by doing as little as possible.

NATURAL BOUNDARIES

Everywhere the flow of people is simple, straight, easy understandable, yet interesting.
 Ex. A different kind of pavement leads to the entrance of public places.





POTENTIAL OF THE VOID

Different scenarios as possibilities for different needs.

COMMUNITY CENTER

The horizontal movement of the residential results in an upwards spiral movement giving full accessibility to everyone.

48

Potential of the void

By working on the border of the site we tried to strengthen the magnificent emptiness. (also in the preliminary search) The landscape as it is now has a lot of potential. Why should we replace this void by something else. Something which will never feel as natural grown as this.

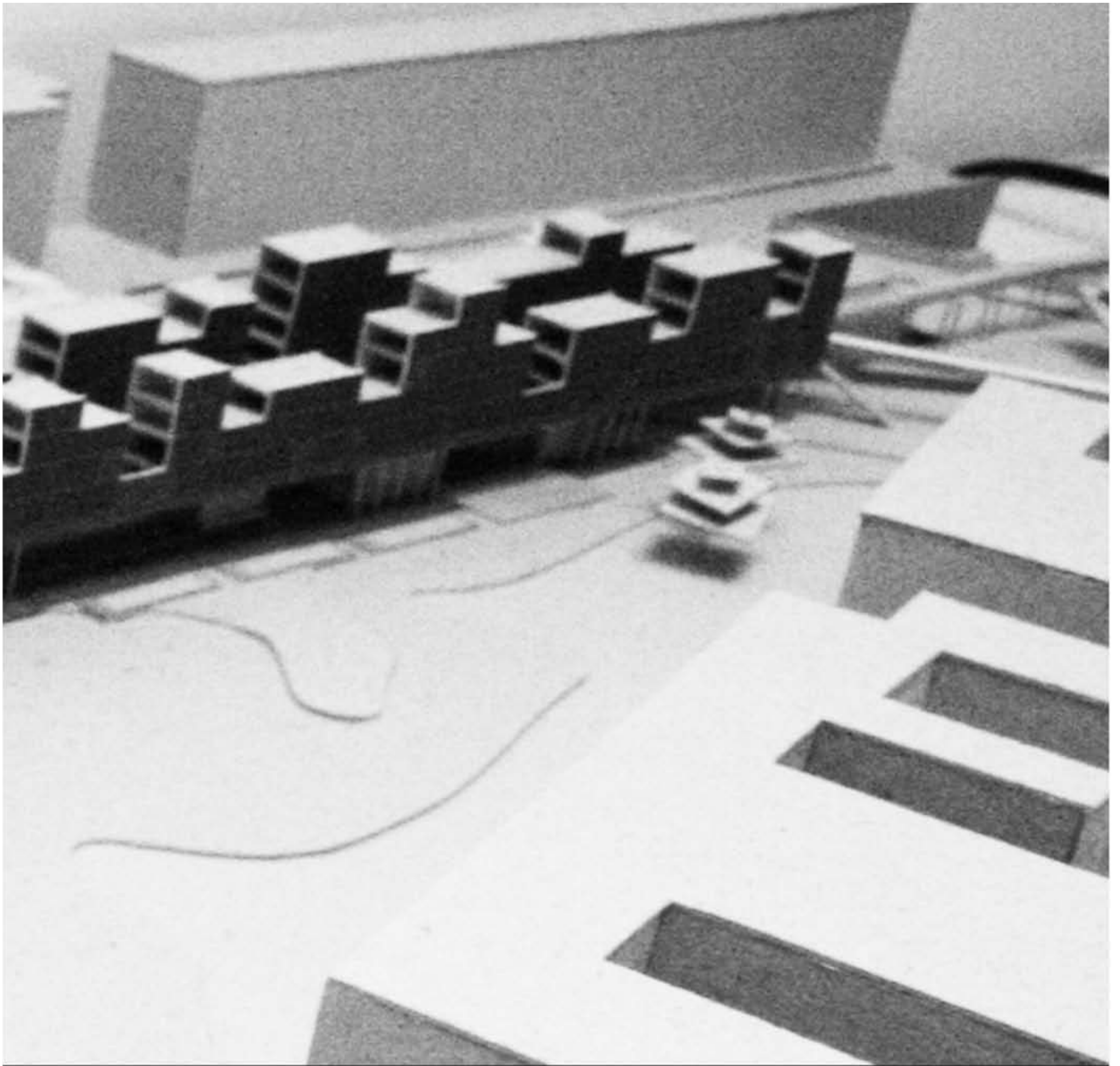
The choice for zero-program also creates possibilities for the future. To give an answer to the changeable needs of the city.

In the next pages there are examples of these possible needs. Not one solution but different solutions for different needs. Maybe alternating in time, maybe all at once. But everything as a possibility.



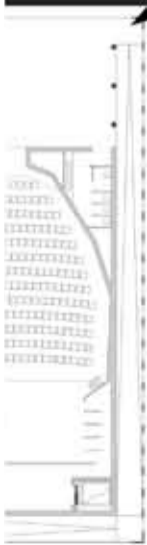
61

Children's daycare center
 Open level
 Entrance, Office
 Theatre
 Meeting, Club
 Skills, Arts and crafts
 Gym, Dance, Changing rooms
 Sports hall



RESIDENTIAL AREA

The horizontal alignment of the houses on the border creates a feeling of strong coherence, especially with the street in between as public common and the community center at the end.



View of the border housing
On each side of the border are situated houses using different types of houses for different needs leaving office spaces in between for parts of the community moved between the houses



INTRODUCTION

At a first glimpse, the site was frightening big, astonishingly beautiful. [A big playground for all our architectural arrogance?] What we looked at was a left-over space of the urban tissue. A place with different identities, views, use

This project is a search for possibilities, coherence, diversity, scale, urban needs. At a large scale we tried to create an answer to inclusive urbanism by not making exclusives, by leaving as many possibilities for the present and surely for the future. There is not a single answer to inclusive urbanism, there should not be "rules" to follow. There should however be different ways to experience, potential for future needs.

On a smaller scale we tried to implement the same idea. Keeping possibilities open [voids, diversity and flexibility in houses.] and accessibility in mind.

These smaller projects are not fenced, they make part of the urban tissue, of the public ground.

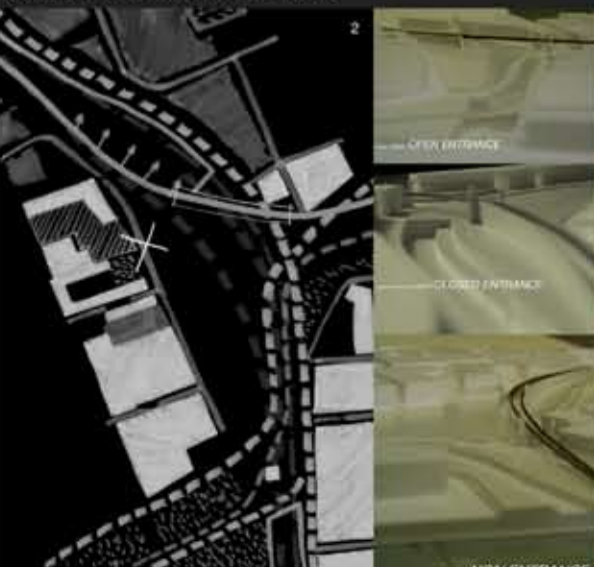
Schindler Award for Architecture 2007 / 2008

Access for All

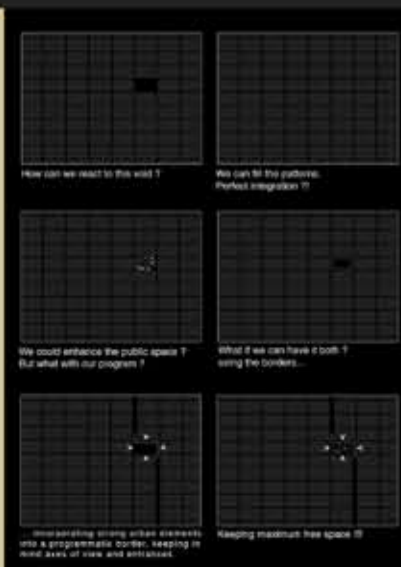
to reclaim the public ground

PRELIMINARY SEARCH

STUDIES ON DEFINING ELEMENTS :
connections, entrances, flows.

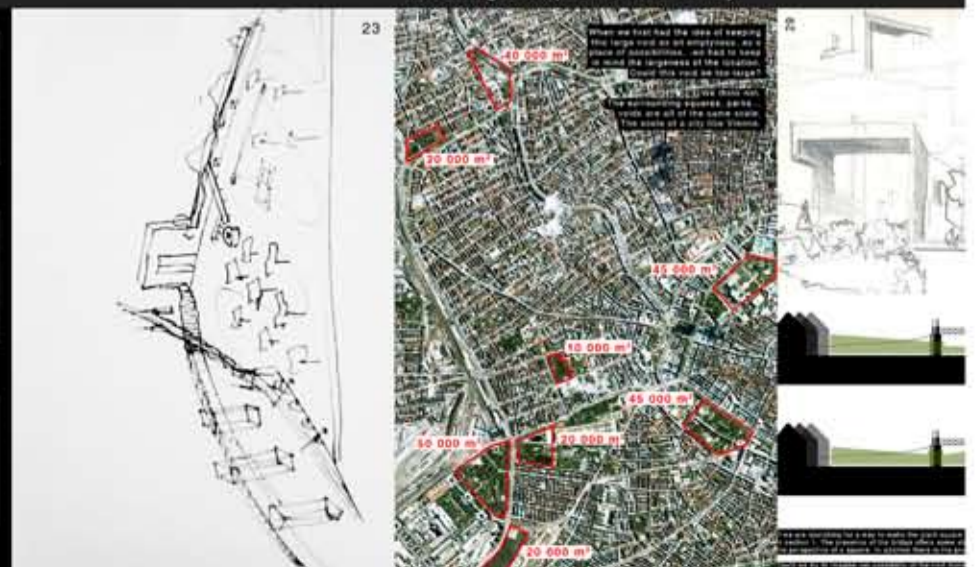


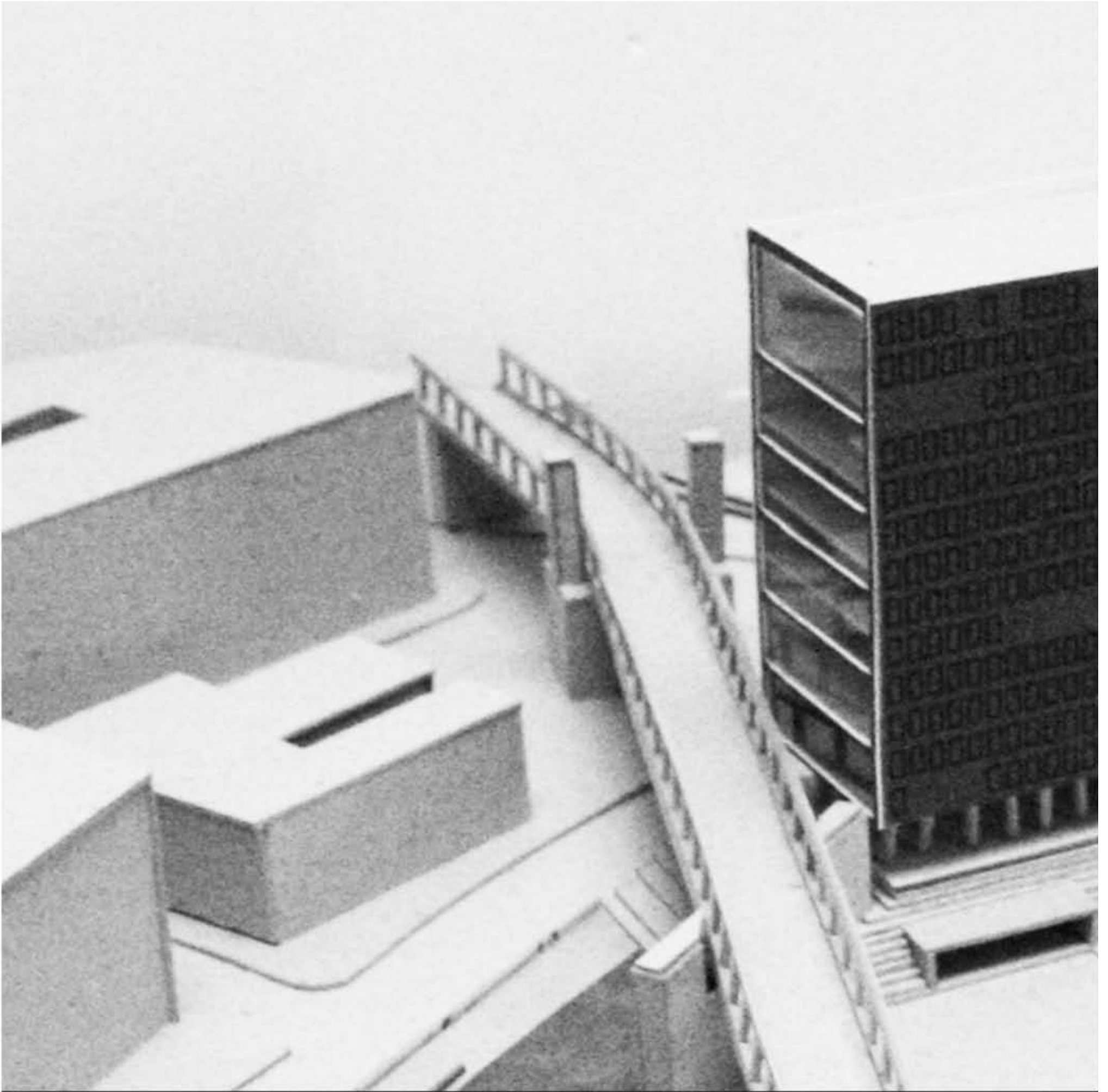
CONCEPT



SCALE

Meaning of squares in the city.





DEFINING THE BORDER

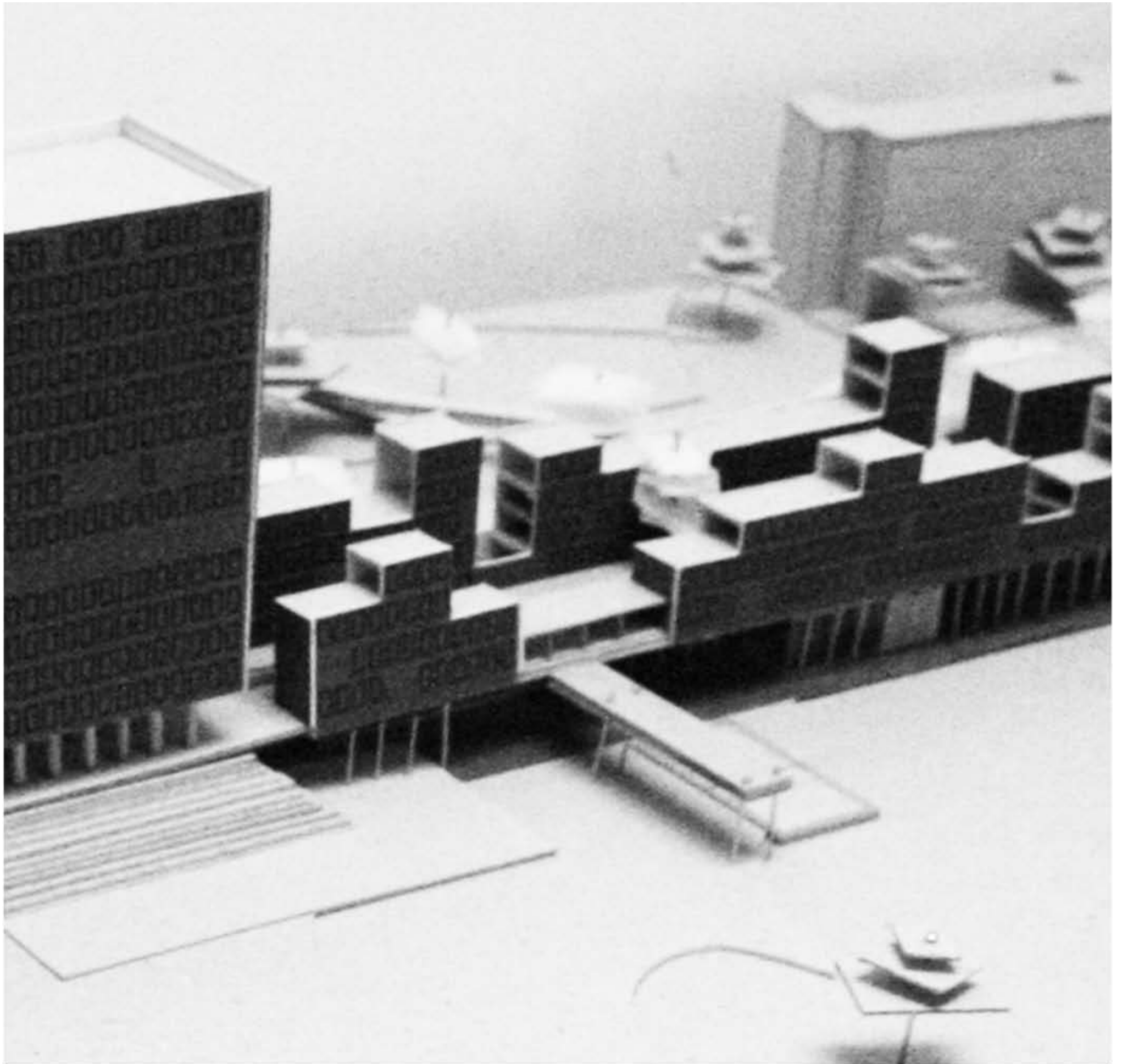
Making a project by doing as little as possible.

NATURAL BOUNDARIES

Everywhere the flow of people is simple, straight, easy understandable, yet interesting.
 Ex. A different kind of pavement leads to the entrance of public places.



DEFINING
 THE
 BORDER



POTENTIAL OF THE VOID

Different scenarios as possibilities for different needs.

COMMUNITY CENTER

The horizontal movement of the residential results in an upwards spiral movement giving full accessibility to everyone.



48

Potential of the void

By working on the border of the site we tried to strengthen the magnificent emptiness. [also in the preliminary search] The landscape as it is now has a lot of potential. Why should we replace this void by something else. Something which will never feel as natural grown as this.

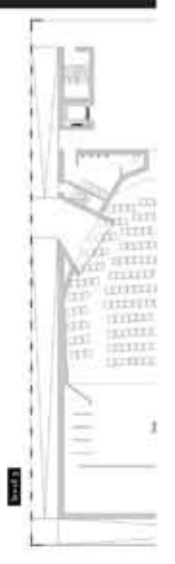
The choice for zero-program also creates possibilities for the future. To give an answer to the changeable needs of the city.

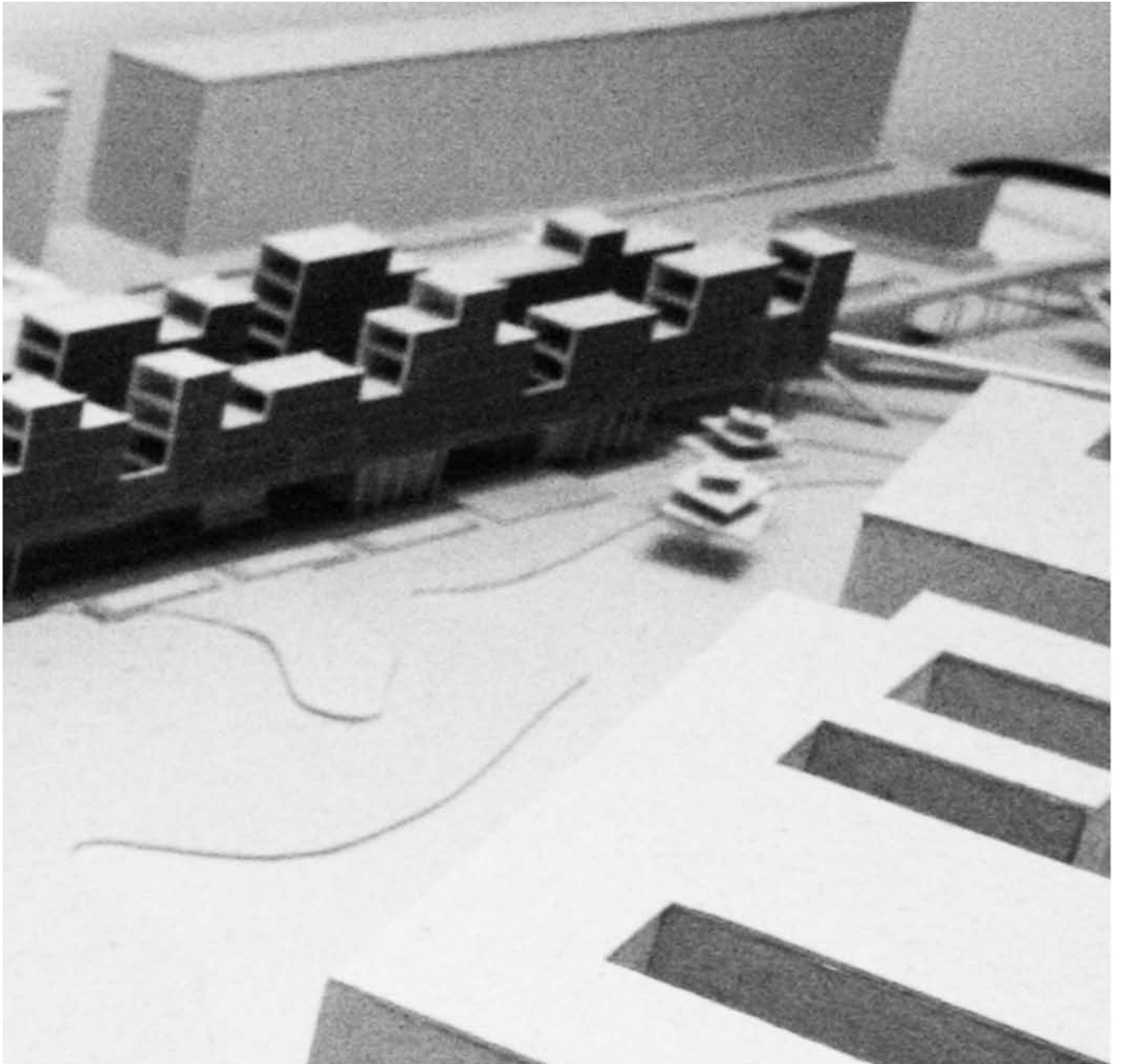
In the next pages there are examples of these possible needs. Not one solution, but different solutions for different needs. Maybe alternating in time, maybe all at once. But everything as a possibility.



61

- 1500m² district center
- Open level
- Meeting, Office
- Fluorite
- Meeting, Club
- Skills, Arts and crafts
- Open, Fitness, Changing rooms
- Service hall



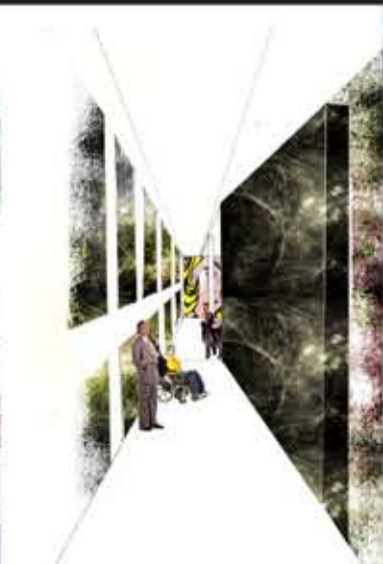
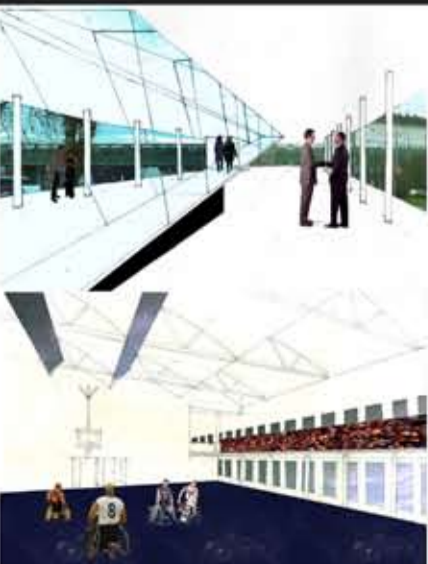


RESIDENTIAL AREA

The horizontal alignment of the houses on the border creates a feeling of strong coherence, especially with the street in between as public common and the community center at the end.



87



89

View of the border housing
On each side of the border we situated houses, using different types of houses for different needs, creating public spaces in between or parts of the community moved between the houses



91